

du v 20 / h 1

COLLI TIR AMAETHYDDOL.



Safle Su V/20/h1



SAFLE SuV 20/h1

Ébrill 11, 2023
(Car 01 4 an^m o laus trwm)



(YFFORD) get Suva / m





MAEN LUND A NANTLAIS ger Su V 20/11

PROBLEMS re. SURFACE WATER by the Abadam Arms



MAWRTH 2023

Llifogydd ar y sgwâr (Abadam Arms)



GWASTRAFF (CARTHON) ar yr ardd!
RAW SEWAGE ON GARDEN.

LLIFOGYDD DROS NOS!

ADEILADU AR BARTH LLIFOGYDD C2.

CLÔS -Y- WENNOL



FLOODING OVERNIGHT!

Photo taken during building of houses on this field.
This water now flows onto other properties.

ADEILADU AR ORLIFDIR

CLOS-Y-WENNOL

Llun a dynnwyd o'r llifogydd ddaeth dros nos yn ystod codi stad Clos y Wennol.
During building of Clos-y-Wennol development flooding appeared overnight.



Caniatawyd codi tai ar Barth Llifogydd C2.
Building permission granted on C2 flood plain.



ADELADU AR BARTH LLIFOGIDD YNG NGHANOL
Y PENTREF

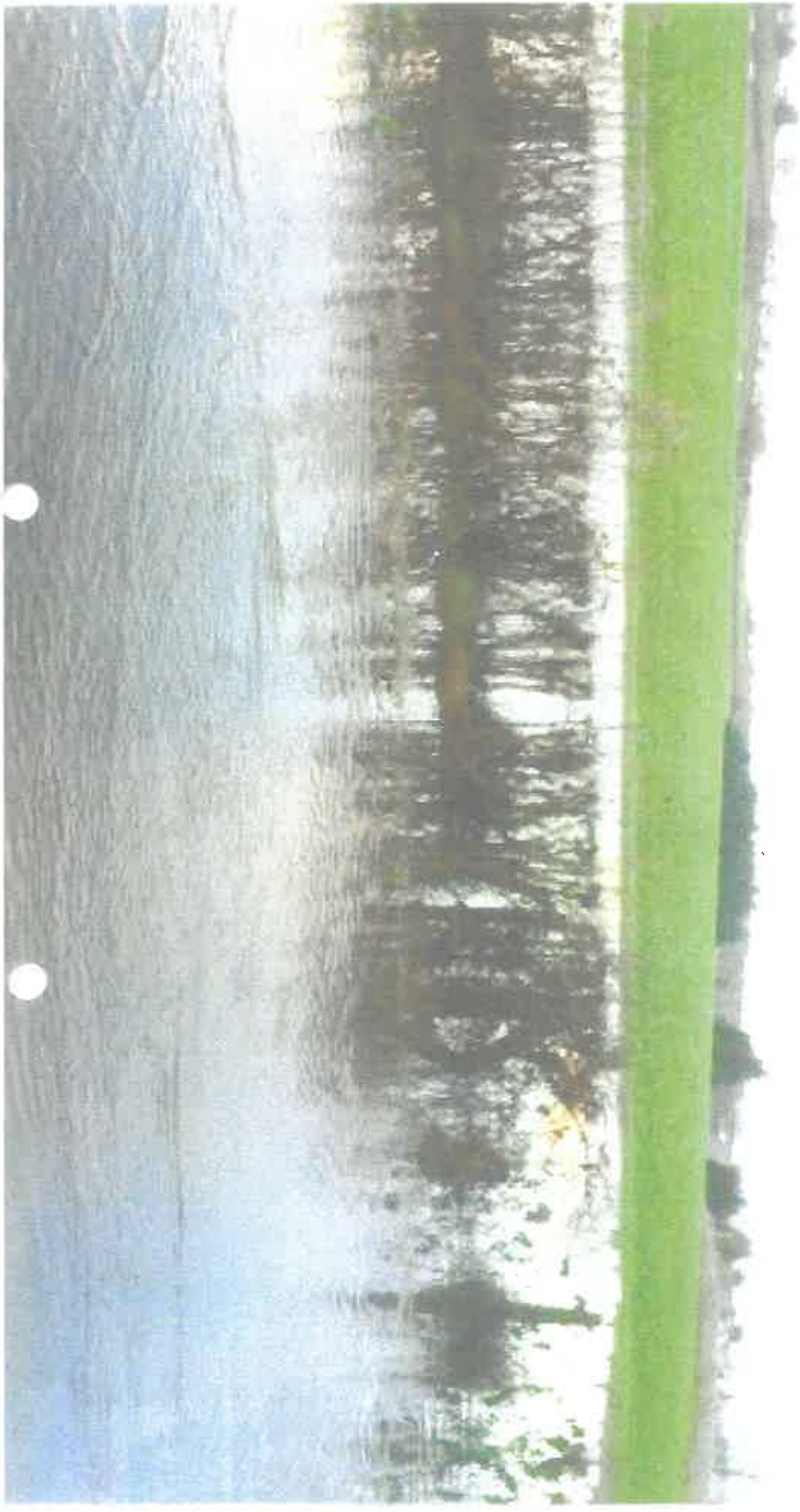


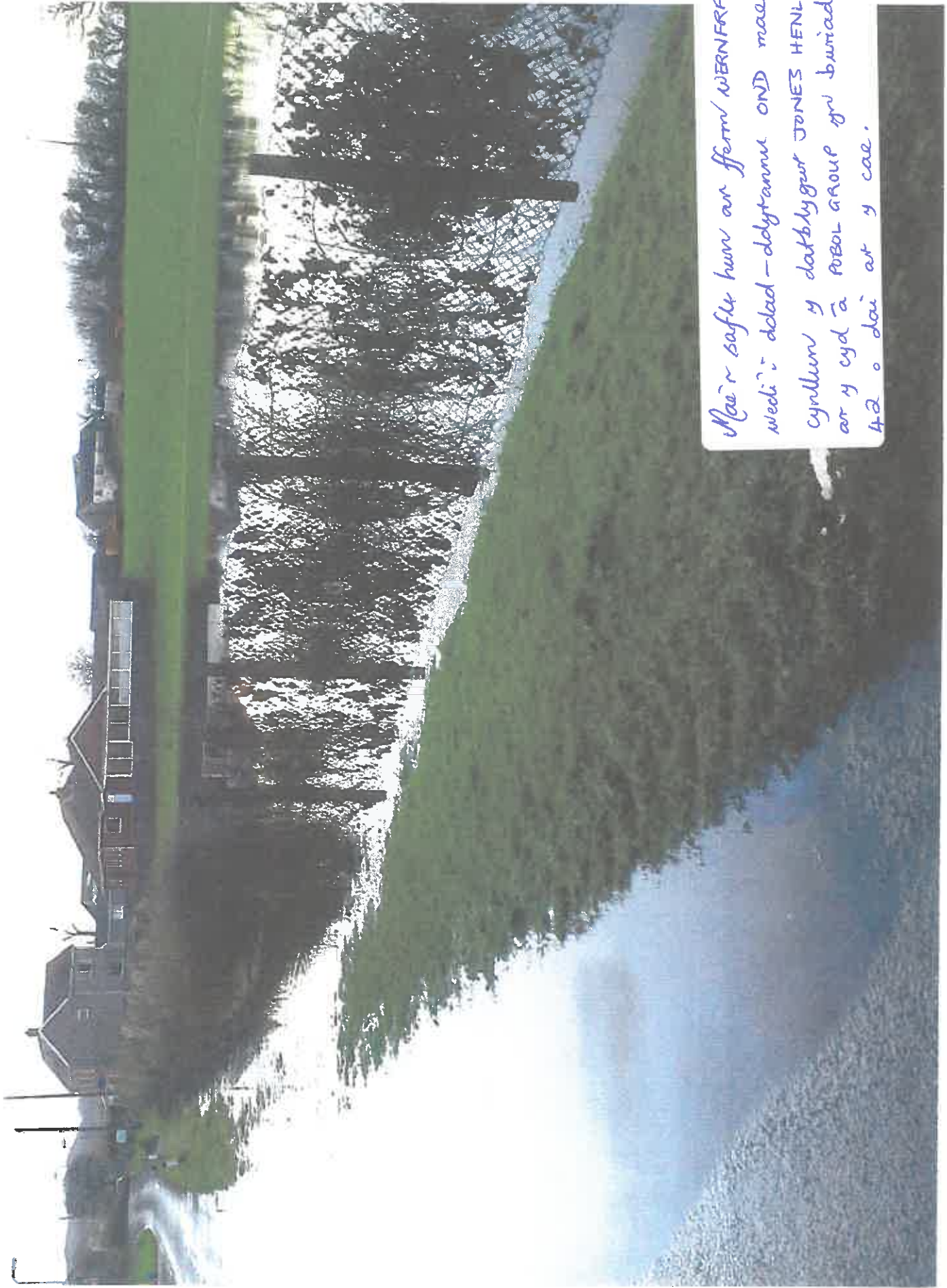


Adeiladu ar bwrth Mifogydd

Y safle dawn sylhys am gyfer 42 o ddi

WERN FRAITH





Mae'r safle hon ar fferm WERNFRAITH
wedi'i ddat-dolytannu ond mae
cynllun y datblygwr JONES HENLLAN Giff
ar y cyd â POBOL GROUP yn bwriadu codi
42 o dai ar y cae.





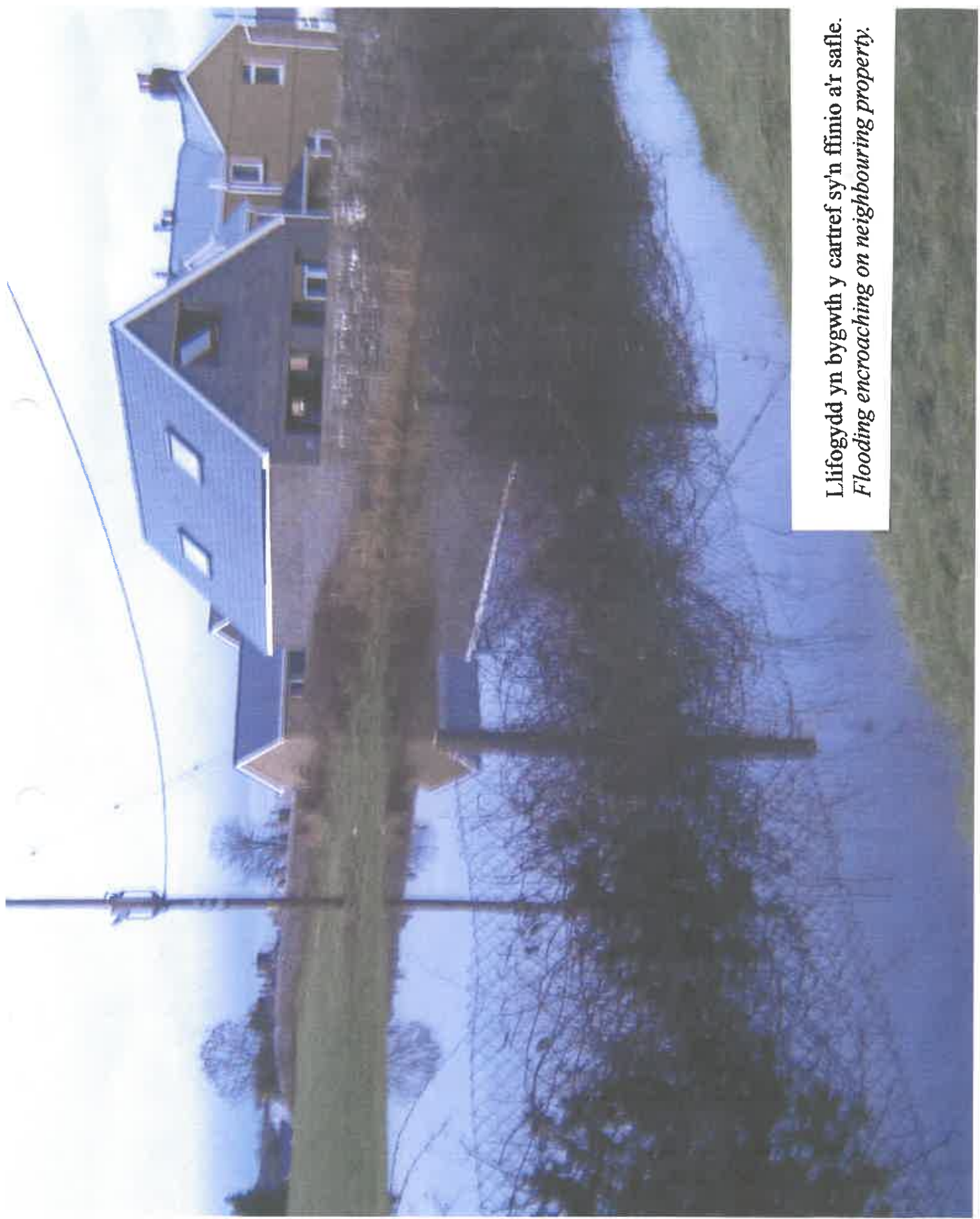
ALT/159/001/D

SAFLE WERNFRAITH.

Mae problem wedi bodoli ers rhai blynyddoedd gyda dŵr yn cromi ar y cae hwn.

There has been a problem with flooding on this field for a number of years.

The residents fear the knock-on effect following any development of this site and the results of concreting this land. Where will the water flow?



Llifogydd yn bygwth y cartref sy'n ffinio a'r safle.
Flooding encroaching on neighbouring property.



Moxio!



Llifogydd dan bont y draffordd PORTH-Y-RHYD
Tachwedd 2009.

Flooding under the fly-over at Porth-y-rhyd,
November 2009



LLIFOGYDD 2009.

2009





LLIFOGYDD 2009.



Lifogydd 2009

PIBELL DDÖR
NANTQAREDIG → FELINDRE

